



## Unique power package.

**CIDAN MEGAPRO** is extremely strong and robust and innovative features make it stronger and more efficient than any folding machine ever. The double frequency driven motors for upper and folding beams allow very fast operating. The upper beam opens as the folding beam returns, for simultaneous positioning prior to the next stage. The MEGAPRO is a powerful and robust machine built for strength yet nonetheless is very easy to use. With the help of the ProLink W control system the folding rail, folding centre and crowning are automatically adjusted according to sheet thickness with fantastic precision. The combination of the ProLink W control system, motorized back gauge and foot pedal control furthermore allows the operator to handle sheets up to 13 ft (4 metres) in length at the width of the entire machine. Automatic tool locking is standard.

Choose MEGAPRO for handling everything from simple fittings to vessel sections or other larger elements. This is where power, speed, integrated technology and precision are brought together in a smart and user friendly machinery.

### The most important advantages:

- ✓ Extremely powerful folder.
- ✓ Segmented tools in clamping beam and bending beam allow bending of complex details.
- ✓ Even radius and high precision thanks to adjustable bending centre and built-in crowning.
- ✓ ProLink W controls all the functions for an optimal result and best capacity utilization.
- ✓ Even large and heavy products can be handled by a single operator.

## Save time, money and the environment using our control system.

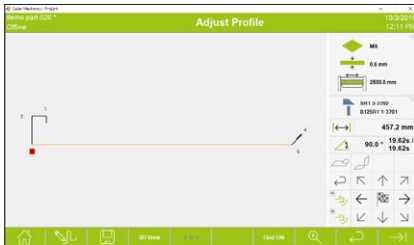
With **ProLink W** you have every possibility to achieve exact and fast control of your folder. You choose whether to use a stored profile, draw your own or enter the measurements with classic line programming. ProLink W suggests bending sequence, checks for collisions, calculates cutting measurements and gives you all the data you need for bending.

The program has a built-in material library that calculates machine parameters from material properties, metal thickness and length of finished piece. From the screen you can follow the bending process and get all the instructions needed for a successful result. Save the

tooling set-up you have chosen and the next operator can easily carry on where you left off.

Of course you can construct your programs off-line, test for possible collisions, change the bending sequence and then upload to the machine's control system. In this way you can have greater utilization of the machine's capacity.

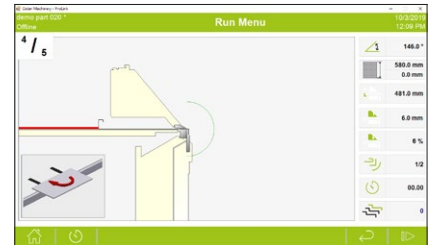
ProLink W is Windows based and can be linked to your network. You can also upload programs using QR code readers. With the planning tool **Production** from nuIT you get the profiles dimensioned directly in your system and you can even upload most file formats and construct bending programs this way.



Draw your own profile and set the measurements, angles and values for radial bending.



This function automatically calculates bending sequence, analyses possible collisions and provides information in graphic display for the operator.



The operator follows progress on the screen and receives instructions for the following operation.



Find out more about MEGAPRO on our demo video: <https://youtu.be/qKPAPGe6wgw>

	Working length " (mm)	Folding capacity			Opening height Clamping beam " (mm)	Outer dimensions			Weight lbs (kg)	Motor	
		Steel <sup>1</sup> " (mm)	Stainless <sup>2</sup> " (mm)	Aluminium <sup>3</sup> " (mm)		Length " (mm)	Width <sup>4</sup> " (mm)	Height " (mm)		Clamping beam hp (kW)	Folding beam hp (kW)
<b>MEGAPRO 31</b>	122 (3100)	0.236 (6.0)	0.149 (3.8)	0.354 (9.0)	13.8 (350)	185 (4700)	141 (3590)	89 (2250)	26124 (11850)	2 x 7.4 (2 x 5.5)	2 x 5.4 (2 x 4)
<b>MEGAPRO 41</b>	161 (4100)	0.197 (5.0)	0.125 (3.2)	0.295 (7.0)	13.8 (350)	224 (5700)	141 (3590)	89 (2250)	30159 (13680)	2 x 7.4 (2 x 5.5)	2 x 5.4 (2 x 4)

Tensile strength <sup>1</sup>400 N/mm<sup>2</sup> <sup>2</sup>600 N/mm<sup>2</sup> <sup>3</sup>200 N/mm<sup>2</sup> <sup>4</sup>With 61" (1550 mm) back gauge.

Dealer

**CIDAN**  
MACHINERY GROUP

CIDAN Machinery Group markets and manufactures **CIDAN, Forstner, Thalmann** and **nuIT**

CIDAN Machinery Inc. • 665 Highway 74 South, Suite 350 • Peachtree City, GA 30269 • Phone: +1 770-692-7230 • [infocidan@cidanmachinery.com](mailto:infocidan@cidanmachinery.com) • [www.cidanmachinery.com/us](http://www.cidanmachinery.com/us)